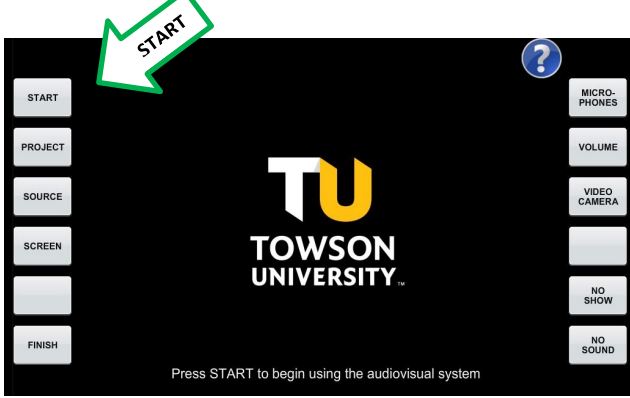


Using the Classroom Technology at Towson University

To Start Using the Classroom System

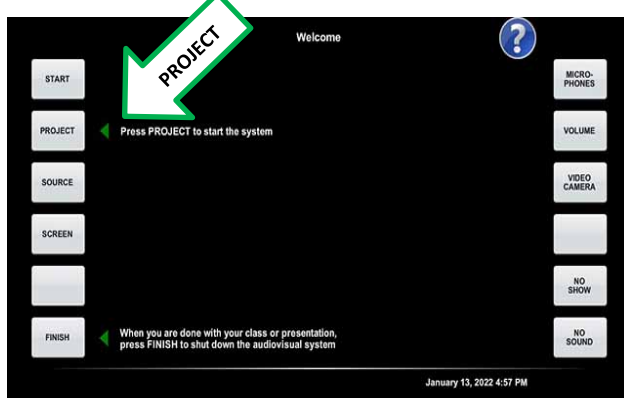
If the touchscreen is blank, press the center of the screen to wake up the system.

Press “**START**” to use the audiovisual system



Follow the directions on the touchscreen

Press “**PROJECT**” to start the audiovisual system



The projector will take about 30-45 seconds to warm-up

Press “**SOURCE**” to choose what you wish to display.
The default is the podium computer



Ver. 1 AH Revised 03/16/23

Source Options

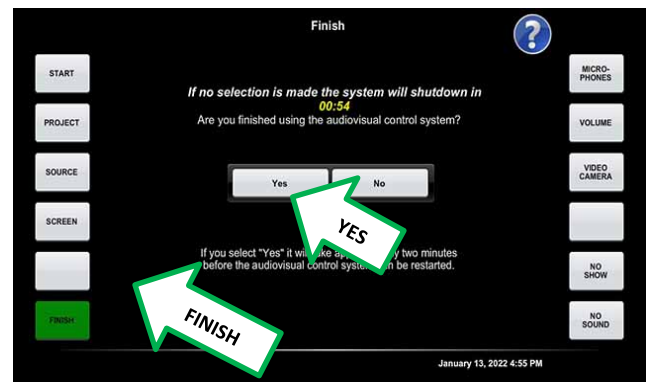
- **Computer:** to display the computer in the podium
- **Mersive:** to display content wirelessly
- **TV Tuner:** to display cable TV
- **HDMI:** to connect an HDMI (digital) device, such as a camera or a laptop with a HDMI connector

Audio Control and No Show Feature

Press the “**VOLUME**” button and then use the **+/-** buttons to raise or lower the volume for all audio
Press “**NO SOUND**” to mute all audio to the system.
Press again to un-mute audio.
Press “**NO SHOW**” to blank the display to the projector.
Press again to show display

To Shut Down the Audiovisual System

Press the “**FINISH**” button at the bottom of the touchscreen.



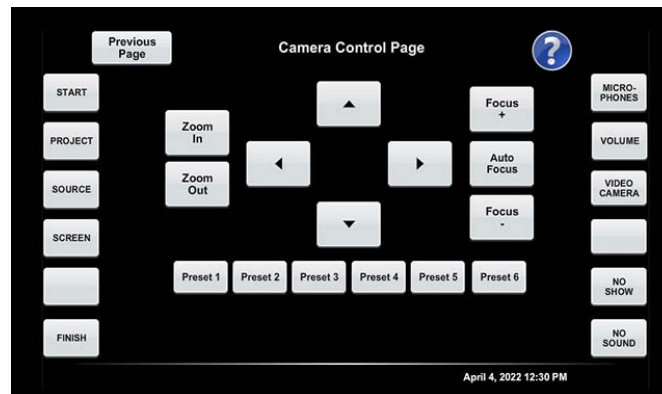
Confirm that you are finished using the audiovisual system by pressing “**YES**”

Logoff of the computer before leaving the room
Once the system is shut down it will take about one minute for the system to cool down and be ready to restart.

Using Camera

To Use the Camera

To use the camera that is integrated into the system, first press the “Record” button on the right side of the touch panel.



From here you will be able to control multiple aspects of the camera to suit your needs including pan/tilt/zoom functions and preset camera angles. The camera can be used with multiple Video Conferencing and recording programs, like the ones below:

Skype for Business: <https://goo.gl/hcrNx2>

WebEx: <https://goo.gl/bQaqjY>

Panopto: <https://goo.gl/NFSFFi>

Using the Mersive Solstice Pod

In many classrooms across campus, faculty and students can wirelessly share content from their computers and portable devices via the Mersive SolsticePods.

To do this, your device(s) **must** be connected to the tu-secure wireless network with your TU NetID and password.

If using a smartphone or tablet, you must download the “Solstice Client” from your app store. On your phone, open your browser and enter the IP address displayed on the Mersive Solstice Pod. Click on “Get App” and it will open your app store.

Please note that you only need to download and install the Solstice app the first time you share the device.

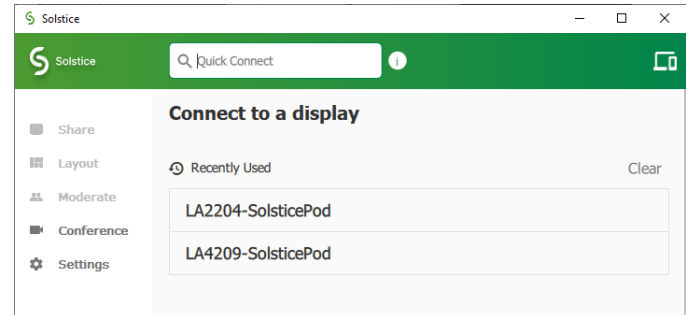
For future connections, simply open the app and enter the Display URL, followed by the four-digit key code.



In the classroom, start the AV system and select the Wireless Input source. The Solstice splash screen should appear on the classroom display.

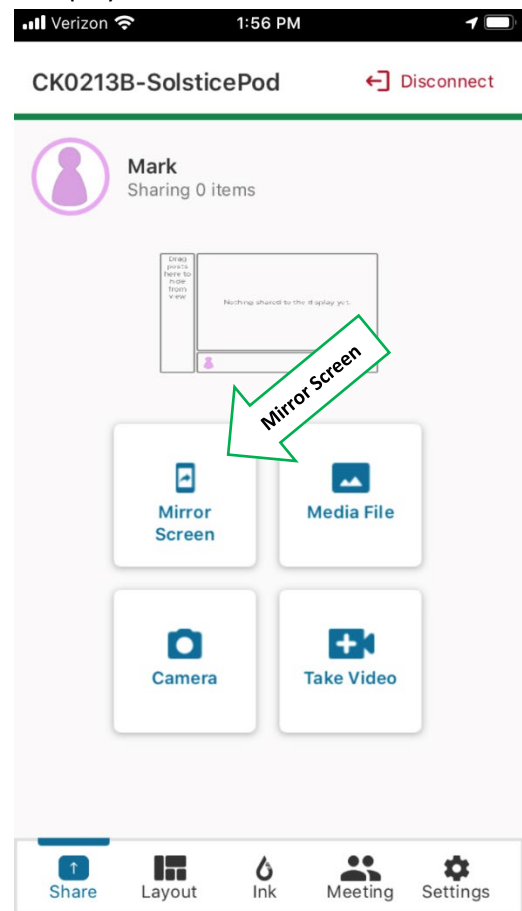
Smartphone/Tablet

You will need to enter the IP address and key of the Mersive SolsticePod in order to connect to it.

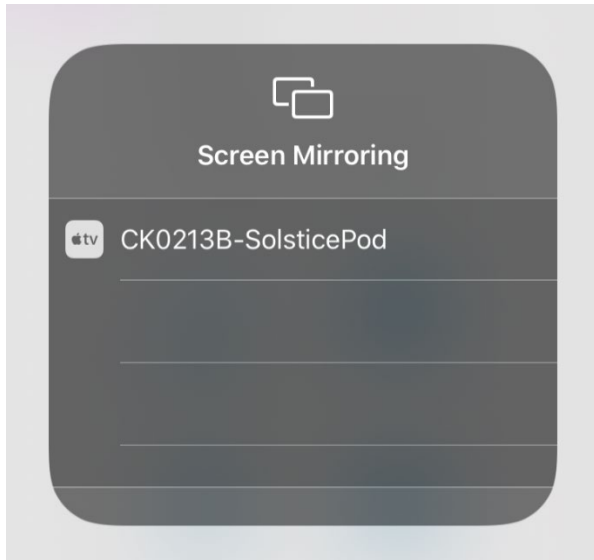


When the app has connected to the SolsticePod, you will see several options for sharing: desktop, open window, or saved file from your device. Pick the one you would like to use, and your content will appear on the classroom display.

To mirror the screen, tap on the Mirror Screen button labeled below. You will then be prompted for the Key which is displayed next to the IP Address.

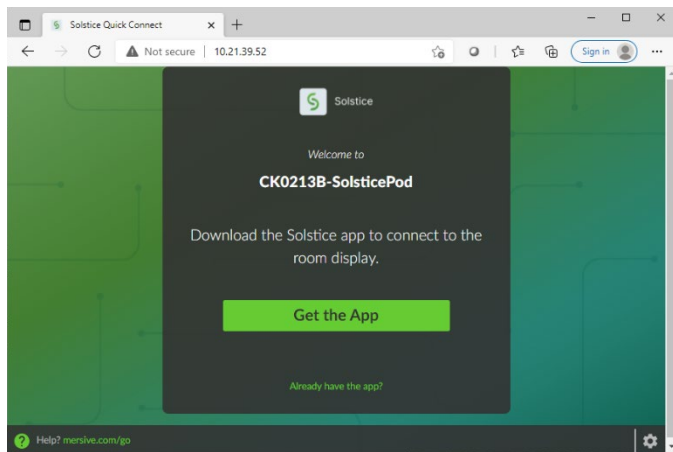


On iOS, you will need to open the AirPlay menu and select the device from the options listed. In some newer spaces, iOS users can connect to the SolsticePods directly through AirPlay without the application.

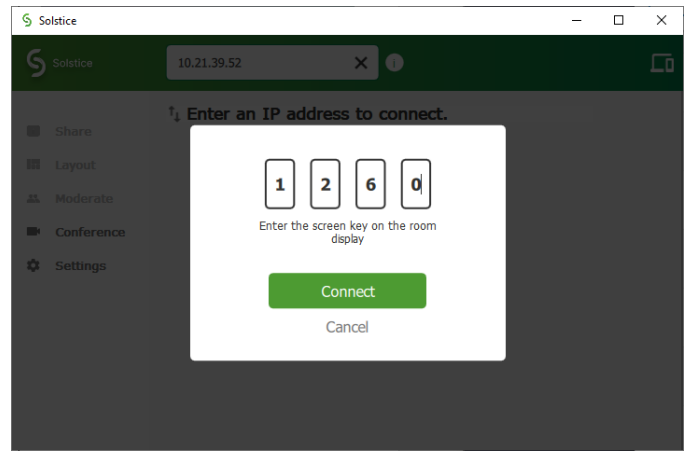


Laptop/Web Browser

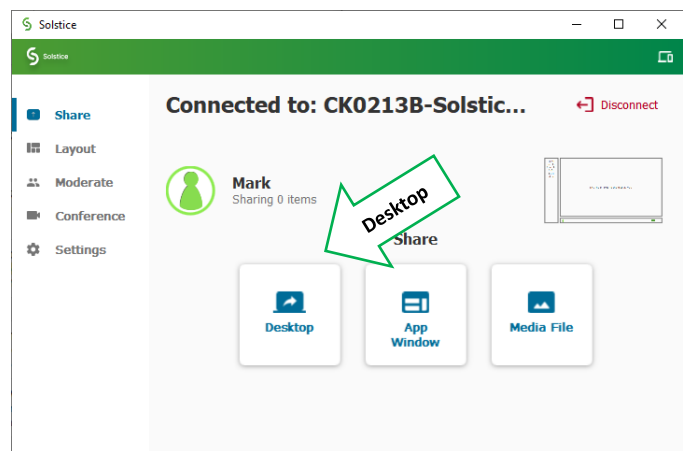
To mirror your screen from a laptop, you will need to open a browser and type in the IP Address in the address bar (<http://10.XX.YY.ZZ>).



If this is your first time connecting, you are prompted to install an application. After Installation, you will be prompted to enter the Key.



After the Key is entered successfully, click on the Desktop button to share your screen.



Note: It may take up to 10 seconds for the device mirroring to sync.

When finished, use the disconnect button in the Solstice app to stop sharing your device.

Troubleshooting

If you're having trouble connecting, make sure your device is on the TU-secure wifi network and check your mirroring settings.

If you need help, call 4-TECH at 410-704-8324 or email cclt@towson.edu.

Additional Resources

Link to "How to Use" resources from Mersive:

<https://documentation.mersive.com/content/pages/using-solstice.htm>



Comcast Towson University Channel Line-Up

Note: To receive channels, your TV must be set to "Cable" and you must scan for channels. See your TV's owner's manual for more information. If you need assistance, call Student Computing Services at 410-704-5151 (options 1, 0)

<u>Channel</u>	<u>Network</u>	<u>Channel #</u>	<u>Network</u>
6.1	Program Guide	48.1	QVC
7.1	Fox News	49.1	HSN
8.1	CNN	50.1	A&E
9.1	HLN	51.1	fyi
10.1	MSNBC	52.1	Bravo
11.1	The Weather Channel	53.1	E!
12.1	CNBC	54.1	Esquire
13.1	Bloomberg	55.1	TLC
14.1	WMAR-2 (ABC, Baltimore)	56.1	TruTV
15.1	WBAL-11 (NBC, Baltimore)	57.1	TV One
16.1	WJZ-13 (CBS, Baltimore)	58.1	BET
17.1	WNUV-54 (CW, Baltimore)	59.1	MTV
18.1	WBFF-45 (Fox, Baltimore)	61.1	VH1
19.1	WHUT-32 (PBS, Washington)	62.1	MTV Live
20.1	WMPT-67 (PBS, Baltimore)	63.1	WZDC - (Telemundo, Washington)
21.1	WUTB-24 (My Network, Baltimore)	64.1	WMDO - (UniMas, Washington)
22.1	WETA-26 (PBS, Washington)	65.1	WQAW - (Azteca, Washington)
23.1	C-SPAN	66.1	WFDC - (Univision, Washington)
24.1	C-SPAN2	69.1	WMJF - (ARTS / Towson University)
25.1	POP	69.2	XTSR TU Student Radio
26.1	USA	69.3	mtvU
27.1	TNT	70.1	UP
28.1	FX	71.1	Sprout
29.1	SyFy	72.1	Disney
30.1	Spike	73.1	Nick
31.1	WGN America	74.1	Cartoon Network
32.1	TBS	75.1	Freeform
33.1	Comedy Central	76.1	EWTN
34.1	Big Ten Network	77.1	ESPN
35.1	BBC America	78.1	ESPN2
36.1	ID	79.1	NBC Sports Network
37.1	Universal HD	80.1	Golf
38.1	Velocity	81.1	Fox Sports 1
39.1	Discovery	82.1	MASN2
40.1	Animal Planet	83.1	The Comcast Network
41.1	History	84.1	Comcast Sports Network
42.1	Viceland	85.1	MASN
43.1	The Food Network	86.1	AMC
44.1	The Travel Channel	87.1	Turner Classic Movies
45.1	HGTV	88.1	Lifetime Movie Network
46.1	Lifetime	89.1	Hallmark Movie Channel
47.1	Hallmark		